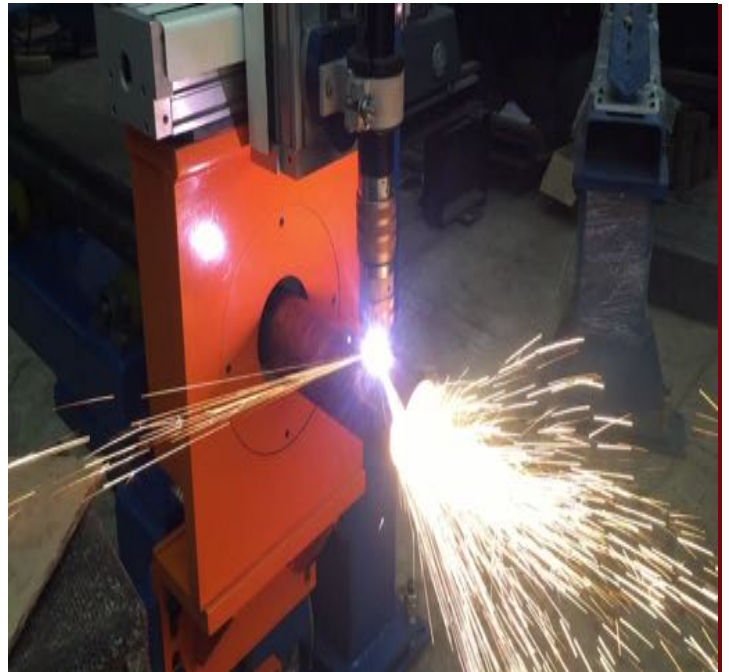
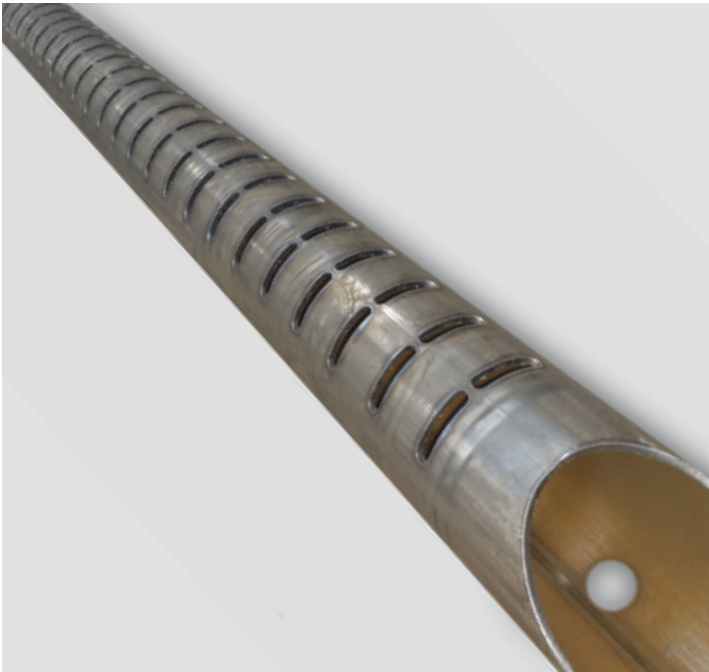


CNC CUTTING MACHINE

DRUPE

AUTOMATION SIMPLIFIED



CNC GAS AND PLASMA CUTTING MACHINE –TUBE Series

Drupe Engineering Pvt. Ltd.

B29/2, MIDC, Taloja, Dist. Raigad,

Navi-Mumbai Maharashtra India– 410208

Tel: - 022 71512150 / 51 Mobile: - +91-9820146344 / 8828250922

Email: - sales@drupeengg.com Website: - www.drupeengg.com



Specification.

Model: SET	TUBE Series
Main Body	Gantry Bridge with Double Drive
Operator Console	Left side / Right Side
Drive Method	Rack – Pinion & Servo gearbox drive for X and Y axis
Effective Cutting Width (mm)	2500, 3000, 4000, 5000, optional sizes available
Effective Cutting Length (mm)	6000, 8000, 12000, optional sizes available
Chuck capacity (mm)	Ø 250-2000 optional sizes available
Idler Assembly	Movable along length option on sizes available
Torches Maximum	1gas 1 plasma other options available
Torch Control	1. Plasma. THC 2. Gas. Semi-Auto Gas
Maximum rapid Speed	12000mm/min,
CNC Control Systems	Global Ex Germany (other options available.)
Plasma Power Source	Hypertherm- USA , Kjelberg- Germany
Gas Solution	Tanaka JAPAN
Servo Motor and Driver.	Mitsubishi, Panasonic, Fuji, Yeskawa JAPAN
Hose & cable carrier	Polymer Energy chain systems for Longitudinal & Traverse (Igus - GERMANY)
Nesting Software	SigmaNest, Hypertherm- USA